

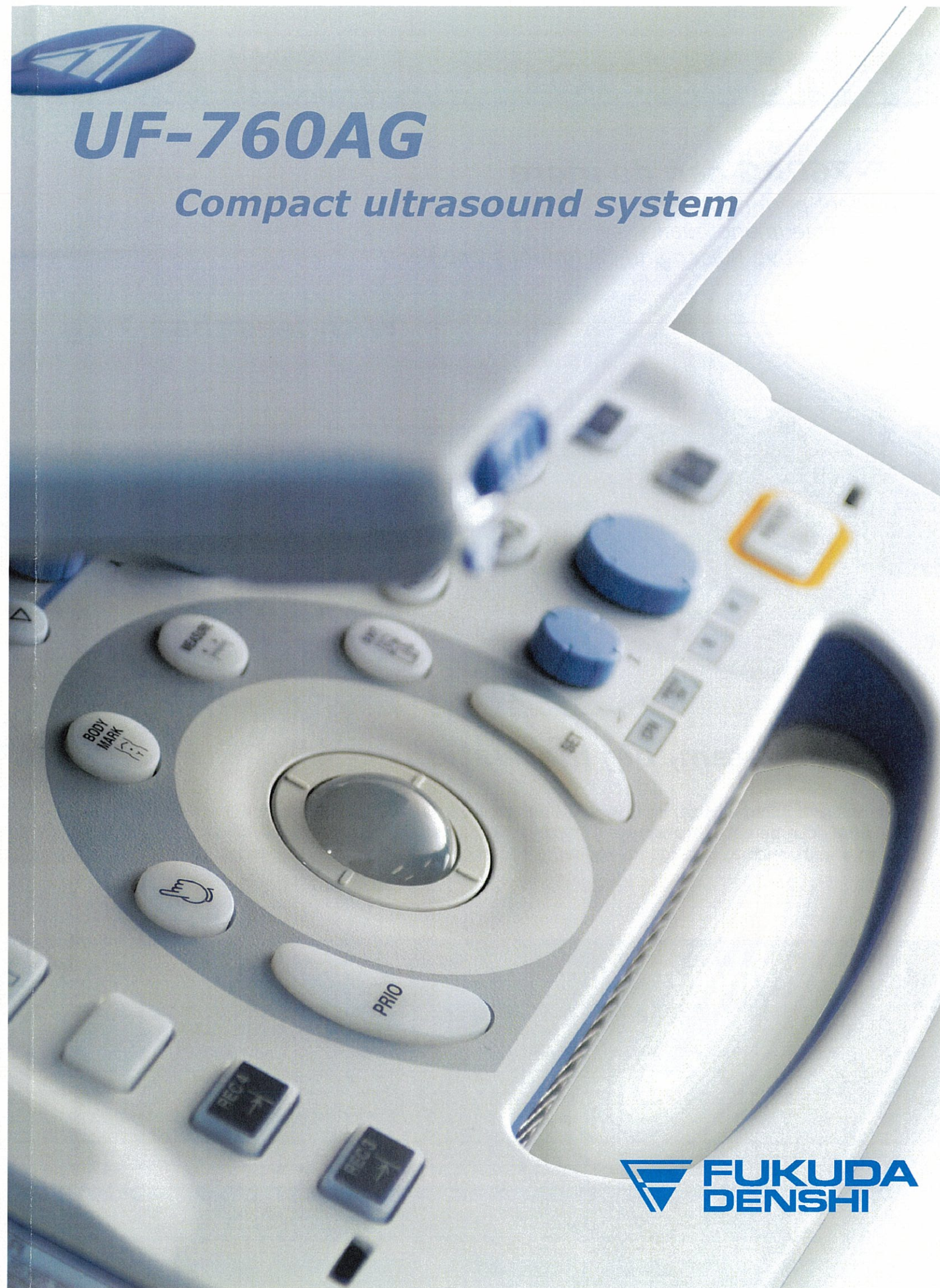
UF-760AG Specifications

Display Unit	15" active matrix LCD flat monitor			
Scanning Methods	Electronic Phased array / Convex array / Linear array / 3D&4D			
Beam Former	Digital, Multi-Beam Processing			
Frame Rate	More than 200 fps in B-mode (transducer and application dependent); max 40 fps in CFM (depth, angle and clinical application dependent) and max 20 volume/s in 4D			
B-Mode	Operation Mode	Spatial and Frequency Compound (Option) Trapezoidal Imaging (Option)		
	Focus Method	Transmitting : 1 step (8 types selectable) Receiving : continuous dynamic focus		
	Display Depth	2 ~ 30 cm (depending on probe)		
	Frequency	2 types selectable and AFA (Automatic Frequency Adjustment)		
	Tissue Harmonic Imaging	on/off, 2 types frequency selectable (depending on probe)		
	Color Scale Imaging	8 types B color selection		
	Display Control	up/down, right/left, view angle variable (depending on probe)		
	M-Mode	Display Mode	Moving Bar	
Sweep Speed		4 steps (2 to 8 sec/screen)		
Color Scale Imaging		8 types M color selection		
PW-Mode	Display Mode	PWD mode, High PRF mode, Spectral Doppler Tissue Imaging (option)		
	Sweep Speed	4 steps (2 to 8 sec/screen)		
	Velocity Range	± 500Hz to ±24KHz (transducer and application dependent)		
CFM Mode	Display Mode	Velocity mode, Directional Power mode, Velocity Power mode, Doppler Tissue Imaging (option)		
	Velocity Range	± 250Hz to ±24KHz (transducer and application dependent)		
	Color Map	Velocity: 4 types, Power: 4 types, DTI: 4 types		
CW Mode (Option)	Display Method	CWD mode		
	Sweep Speed	4 steps		
	Velocity Range	± 1KHz to ±48KHz (transducer and application dependent)		
Imaging Control	Gain	60 ~ 100 dB, 32 steps		
	STC	8 sliders		
	Dynamic Range	48 ~ 96 dB, 8 steps		
	Echo Enhance	8 Steps		
	Smooth	4 Steps		
	Post Processing	8 Steps		
	Line Density	2 Steps		
	ECG synchronized acquisition	Dual Time		
Probe Connection	2 Active Connectors			
Biological Signal	ECG (option)			
Measurements and Calculations	General; Cardiology; Vascular; Urology; OB/GYN; Report Function			
Patient Archiving	Integrated PACS; Modality Worklist; Long Term Archiving; Backup			
Image Filing	600 frames (Cine Memory (max 3000 frames with Long Cine option) USB Memory; 160 GB HDD; External DVD			
Network	LAN; DICOM (option)			
General	Power	100-120/200-240 ±10%; 50-60Hz		
	Power Consumption	150VA		
	External Dimensions	367(W)x364(D)x98(H) mm		
	Weight	6.9 kg		
Options	UF-760AG Trolley	OTR-02	CW Doppler	UF-760AG-CWD
	ECG Unit	UF-760AG-ECG	Cardiac Package	UF-760AG-CPG
	i/o Extension Unit	UF-760AG-IOE	DICOM Store SCU	UF-760AG-SCU
	Battery Pack	UF-760AG-BAT	DICOM MWL	UF-760AG-MWL
	DL-Adapter	UF-760AG-DLA	Stress Echo Package	UF-760AG-STE
	Isolation Transformer	UF-760AG-ISO	Long Cine Option	UF-760AG-LCL
	Foot switch	OA-293	3D/4D Option	UF-760AG-4D
	Cable Manager for Trolley	UF-800XTD-CMG	Easy Optimization	UF-760AG-EOP
			Trapezoidal & Compound	UF-760AG-TAC
Probes	SA16	FUT-SA162-5P	4-9MC	FUT-4-9MC
	3-8PA	FUT-3-8PA	5-12L50	FUT-5-12L50
	CA60	FUT-CA602-5P	LA38	FUT-LA385-12P
	CVA40	FUT-CVA403-6A	TV11	FUT-TVG114-7A



39-4, Hongo 3-chome, Bunkyo-ku, Tokyo 113-8483, Japan
Tel: +81-3-5684-1455 Fax: +81-3-3814-1222
www.fukuda.com

UF760AG-BR-201103-2.0

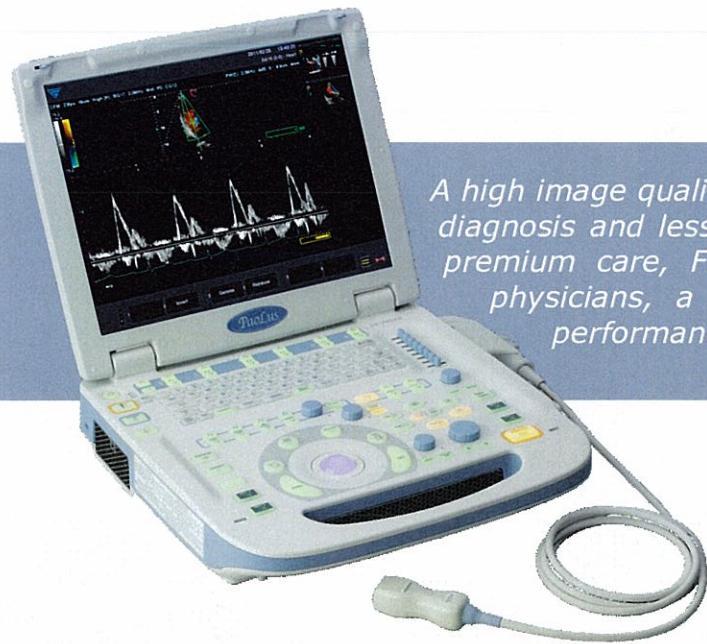


A new generation of small ultrasound systems

UF-760AG can do more

Excellent performance
Undeniable image quality
Hypersensitive Pulsed and Continuous Doppler

With less than 7 kg



A high image quality leads to earlier disease detection, more accurate diagnosis and less invasive treatments. In order to ensure patient's premium care, Fukuda Denshi decided to provide to even more physicians, a small and easy to carry device with the best performance of an ultrasound system.

Small system, big innovation

As a result of its small size, light weight and large battery autonomy (more than one hour), UF-760AG can be easily transported, making it the right choice for all point-of-care environments such as emergency rooms, ambulances, domiciliary care or even the sports field.



All these features allow having a complete and efficient system in a very compact size.

Complete and Efficient

- ✓Intuitive Workflow
- ✓Large Ultrasound Area
- ✓State of the art image quality
- ✓Multi languages
- ✓Full Measurement and Report Package
- ✓Big storage capacity
- ✓Easy image setup through Easy Optim
- ✓i/o Extension Unit



Large Range of Features and Options

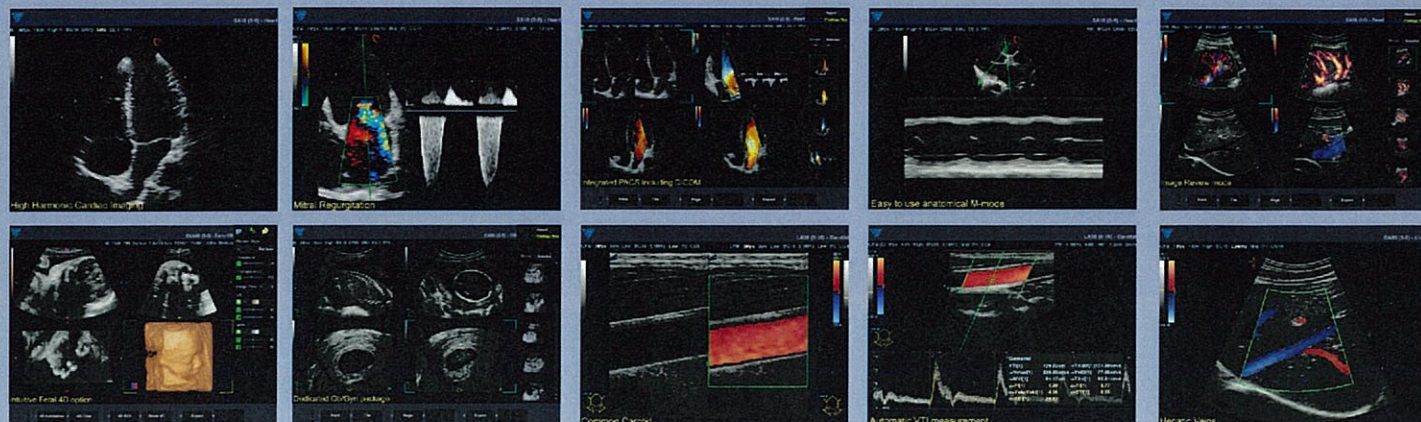
- Cardio Package (including Anatomical M-mode)
- CW • Stress Echo • Trapezoidal Imaging
- EasyOptim • Spatial Compounding • 3D/4D
- Long Cine Loop • DICOM MWL, Store SCU

One portable device, two probes

Switch probe, application and setup at a keystroke time. With two active connectors integrated directly on UF-760AG your examinations will be faster, better and more comfortable.



Large Range of Medical Applications



Full Probe Assortment

- | | | | | |
|----------------|-------------------------|------------------|--------------------|-----------------------|
| Cardiac | Vascular | Abdominal | Small Parts | Ob/Gyn |
| SA16
3-8PA | LA38
5-12L50
SA16 | CA60
CVA40 | 5-12L50
LA38 | CA60
CVA40
TV11 |