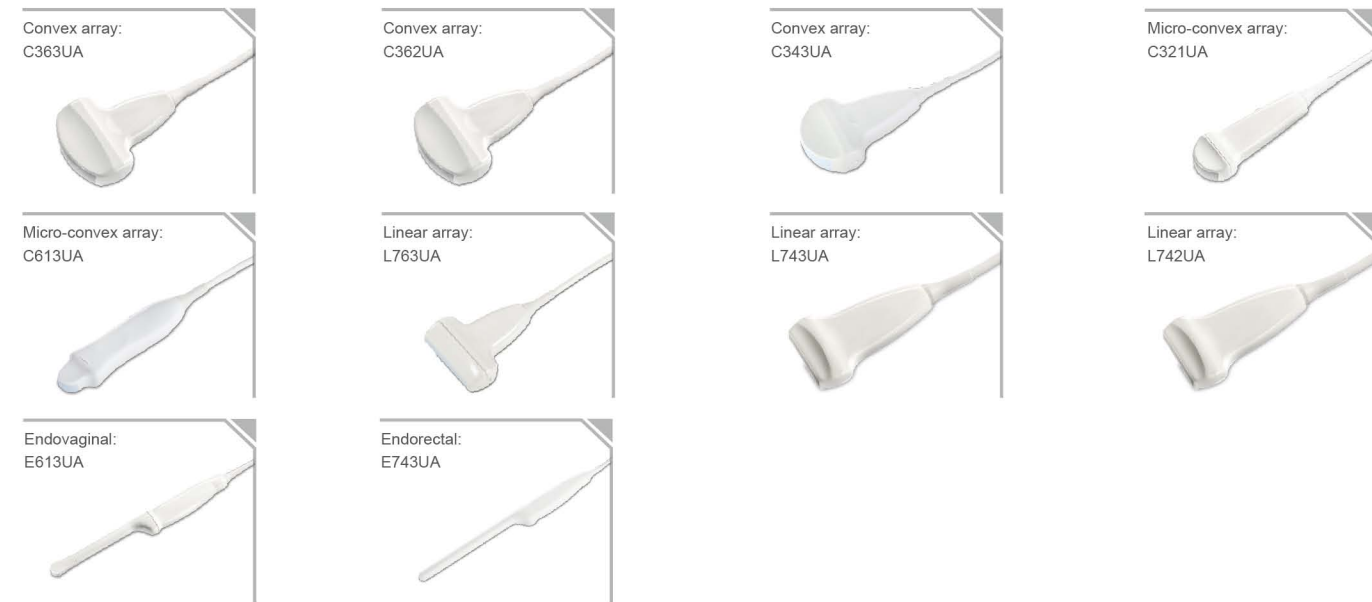




DUS 60

Technical Specifications



General:

Imaging mode: B, B+B, 4B, B+M, M, and PW
 Gray scales: 256
 Display: 12.1" TFT-LCD
 Transducer frequency: 2.0-10.0MHz
 Transducer connector: 2 standard
 Beam-forming: Digital Beam-forming
 Dynamic Receiving Focusing
 Real-time Dynamic Aperture
 Dynamic Frequency Scanning
 Dynamic Apodization
 Tissue Harmonic Imaging
 Tissue Specific Imaging
 Scanning angle: up to 152 degree (depending on transducers)
 Scanning depth (mm): from 19 to 245 (depending on transducers)

Functions:

Cine loop: 256 frames bidirectional cine-loop
 Zoom: x1.0, x1.2, x1.4, x1.6, x2.0, x2.4, x3.0, x4.0 in distance
 panoramic zoom in real-time and frozen condition
 Storage media: Built-in Flash, External USB-Memory stick
 Built-in image archive: 504MB built-in image storage
 Body mark: >130 types
 Transducer auto-detection
 16-segment acoustic power output adjustment

Others:

Peripheral port: Video output x 1
 VGA output port x1
 USB port x 2
 DICOM3.0 X 1 (optional)
 Power supply: 100V-240V ~ 50Hz / 60Hz

Lithium battery: Continuous working for 2 hours
 Dimensions: 330mm(L) X 320mm(H) X 220mm(W)
 Net weight: 7.1kg

Imaging Processing:

Pre-processing: Dynamic range
 Edge enhancement
 Frame correlation
 Line correlation
 Smooth
 AGC
 8-segment TGC adjustment
 IP (Imaging Process)
 Post-processing: Gray map
 Gamma correction
 Rejection
 Pseudo-color
 Black / white reverse
 Left / right reverse
 Up / down reverse
 Image rotation at 90 degree interval

Measurement & Calculation:

B-mode: distance, circumference, area, volume, ratio stenosis%, histogram, and angle
 M-mode: distance, time, slope, and heart rate
 D-mode: time, heart rate, velocity, acceleration, trace, and RI
 Software packages: General,obstetric, small parts, gynecology,orthopedics, cardiology, peripheral vessels, and urology

Display:

Date, Time, Probe Frequency, Frame Rate, Patient Name, Patient ID, Hospital Name, Measurement Values, Body Marks, Annotation, Probe Position, Full-image-region edit

Standard configurations:

DUS 60 main unit
 12.1" TFT-LCD monitor
 Two transducer connectors
 256 frames cine loop memory
 504MB built-in image storage
 Two USB ports
 Measurement & calculation software packages
 Convex array transducer: C363UA (2.0/ 3.0/ 4.0/ 5.0/ 6.0MHz)

Options:

Linear array transducer: L743UA (6.0/ 7.0/ 8.0/ 9.0/ 10.0MHz)
 Linear array transducer: L742UA (6.0/ 7.0/ 8.0/ 9.0/ 10.0MHz)
 Linear array transducer: L763UA (6.0/ 7.0/ 8.0/ 9.0/ 10.0MHz)
 Convex array transducer: C343UA (2.0/ 3.0/ 4.0/ 5.0/ 6.0MHz)
 Convex array transducer: C362UA (2.0/ 3.0/ 4.0/ 5.0/ 6.0MHz)
 Micro-convex array transducer: C321UA (2.0/ 3.0/ 4.0/ 5.0/ 6.0MHz)
 Micro-convex array transducer: C613UA (4.5/ 5.5/ 6.5/ 7.5/ 8.5MHz)
 Endorectal transducer: E743UA (6.0/ 7.0/ 8.0/ 9.0/ 10.0MHz)
 Endovaginal transducer: E613UA (4.5/ 5.5/ 6.5/ 7.5/ 8.5MHz)
 Needle-guided brackets for transducers
 Video printer
 Laser printer
 Inkjet printer
 DICOM3.0
 Footswitch
 Lithium battery
 Mobile trolley
 Hand carried bag

EDAN

DUS 60



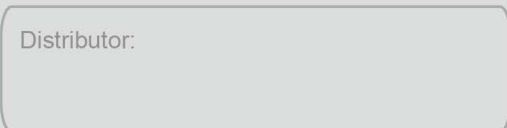
EDAN

EDAN INSTRUMENTS, INC.

3F-B, Nanshan Medical Equipments Park,
 Nanhai Rd 1019#, Shekou, Nanshan, Shenzhen,
 518067 P.R. China

Tel: +86-755-2689 8326 Fax: +86-755-2689 8330
 www.edan.com.cn Email: info@edan.com.cn

Distributor:



Digital Ultrasonic Diagnostic Imaging System

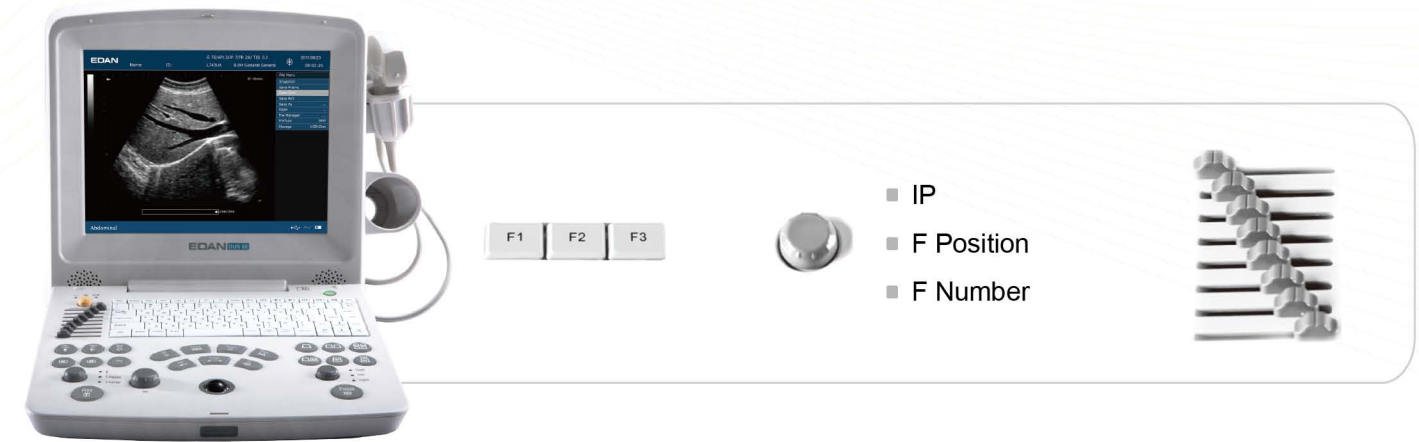
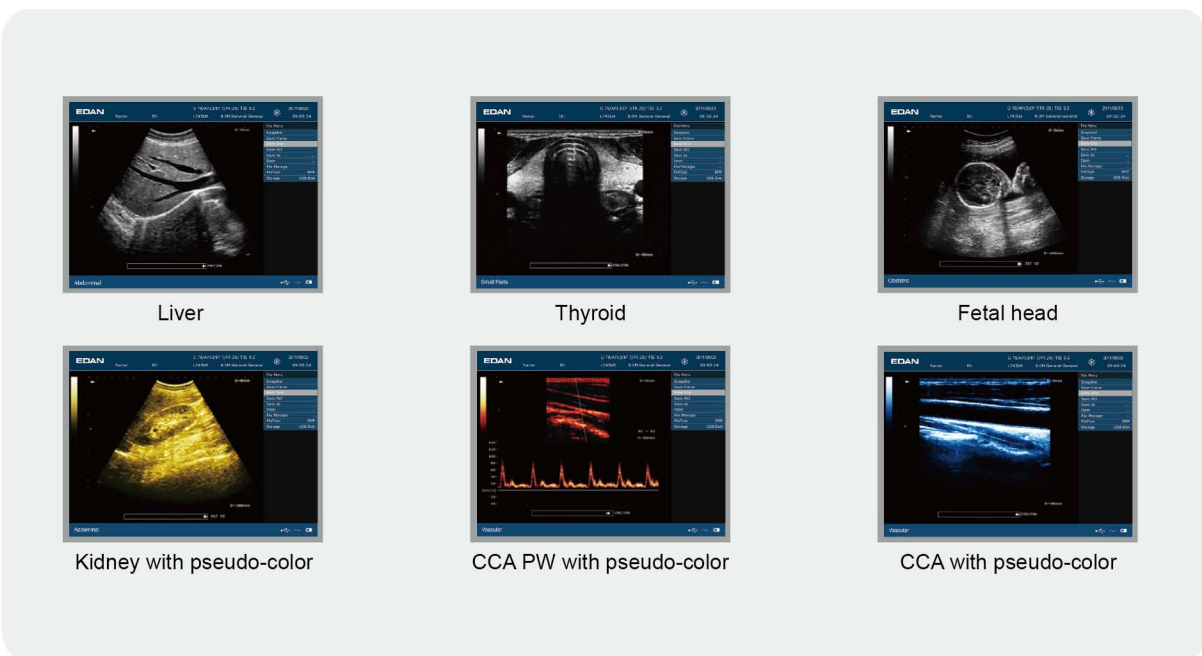
Care for Health





DUS 60

The DUS 60 is an impressive new compact ultrasound system, providing superb value and the best quality across the entire range of applications, with enhanced support of PW imaging to meet the higher diagnostic requirements.



- IP
- F Position
- F Number



Powerful Technologies to Be Your Right Assistant

- Complete Digital Beam Forming technologies achieve high quality imaging
- THI and TSI technology present sharp and clear imaging accordingly
- PW Doppler brings more clinical diagnostic values on vascular disease
- 5-frequency broadband transducer selection for wide clinical applications including abdomen, obstetrics, small parts, gynecology, orthopedics, cardiology, peripheral vessels and urology



Go Anywhere You Need to Go

- Compact and lightweight design brings excellent mobility
- 12.1" folding high resolution TFT-LCD screen generates image clarity
- Built-in battery ready for scanning 2 hours at point-of-care



Definite More Meaning on User-friendly

- One touch image quality optimization by smart IP key
- Rational-designed backlight palm controller
- User-defined keys contribute smooth operation process
- Quick-save key helps you the maximum patient throughout



Feasible elements to enhance your confidence

- Intelligent 8-segment TGC for precise adjustment
- Multi-format data transferring via USB and DICOM
- Multi-pseudo-color options for personalized needs